

FOR SALE

LATIMER STREET
WESTCOTES
LEICESTER
LE3 0QF

Offers Over
£180,000

FEATURES

- No chain
- 3 Bedrooms
- Walking distance to many local amenities
- Dining Room
- uPVC double glazing
- Freehold
- Mid Terraced House
- Sitting Room
- Bathroom
- Gas central heating



 **SETHS**

3 Bedroom Mid Terraced House for sale in Leicester

GROUND FLOOR

SITTING ROOM

10'11" x 10'7"

Laminate flooring, radiator, meter cupboards, uPVC double glazed window

DINING ROOM

11'10" x 10'9"

Carpeted, radiator, uPVC double glazed window

KITCHEN

18'11" x 5'10"

Wall and base units with worktops over, 4 ring gas hob with extractor hood, built-in oven, sink with mixer tap and drainer, plumbing for washing machine, space for fridge/freezer, lino flooring, partly tiled walls, pantry, radiator, uPVC double glazed window

BATHROOM

WC, wash hand basin with mixer tap and vanity units, bathtub with shower overhead, lino flooring, partly tiled walls, radiator, extractor fan, uPVC double glazed window

FIRST FLOOR

BEDROOM 1

12'0" x 11'1"

Carpeted, radiator, uPVC double glazed window

BEDROOM 2

11'10" x 8'11"

Carpeted, radiator, storage cupboard, single glazed window, uPVC double glazed window

BEDROOM 3

8'11" x 5'10"

Carpeted, radiator, uPVC double glazed window

OUTSIDE

Small yard to the rear with wooden fence and walls surround.

ADDITIONAL INFO

Tenure: Freehold

EPC rating: D

Council Tax Band: A

Council Tax Rate: £1605

Mains Gas: Yes

Mains Electricity: Yes

Mains Water: Yes

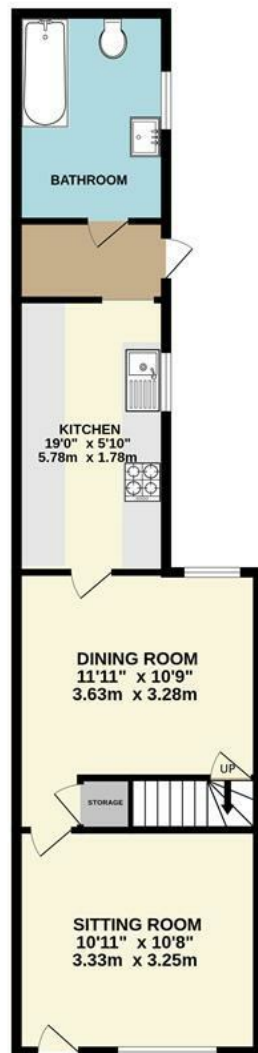
Mains Drainage: Yes

Broadband availability: Full Fibre Broadband



UPPINGHAM ROAD OFFICE SALES | 265 UPPINGHAM ROAD, LEICESTER, LE5 4DG

GROUND FLOOR



1ST FLOOR



Call us on

0116 266 9977

info@seths.co.uk

www.seths.co.uk

Council Tax Band

A

Energy Efficiency Rating

	Current	Potential
Very energy efficient - lower running costs		
(92 plus) A		
(81-91) B		
(69-80) C		79
(55-68) D	58	
(39-54) E		
(21-38) F		
(1-20) G		
Not energy efficient - higher running costs		
England & Wales	EU Directive 2002/91/EC	

Agents Note: Whilst every care has been taken to prepare these particulars, they are for guidance purposes only. All measurements are approximate and are for general guidance purposes only and whilst every care has been taken to ensure their accuracy, they should not be relied upon and potential buyers are advised to recheck the measurements.

Whilst every attempt has been made to ensure the accuracy of the floorplan contained here, measurements of doors, windows, rooms and any other items are approximate and no responsibility is taken for any error, omission or mis-statement. This plan is for illustrative purposes only and should be used as such by any prospective purchaser. The services, systems and appliances shown have not been tested and no guarantee as to their operability or efficiency can be given.
Made with Metropix ©2025



SETHS